

SAMANA
HILLS
SOUTH 3



INTRODUCING

SAMANA
HILLS
SOUTH 3

A Retreat *of*
Timeless Prestige

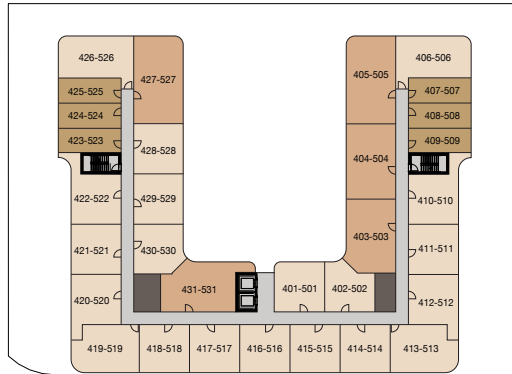
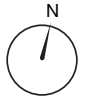
Set within the heart of Dubai South, this home is your sanctuary of peace. Blending modern living with timeless elegance, it offers a retreat unlike any other. Here, you're not just buying a residence, you're claiming a lifestyle that places you at the center of Dubai's future.



Floor *and*
Unit Plans

SAMANA
HiLLS
SOUTH 3

FLOOR PLANS



TYPICAL LEVEL 04 & 05

- STUDIO
- 1 BEDROOM + STUDY
- CIRCULATION
- AMENITIES
- 1 BEDROOM
- 2 BEDROOM
- SERVICES

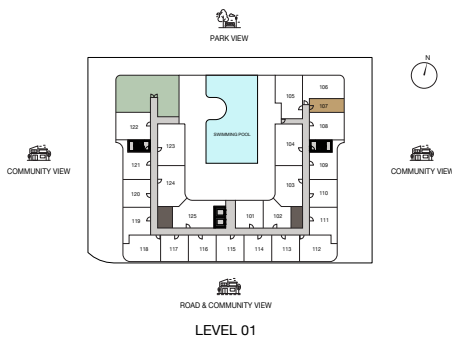
Disclaimer: 1. All Areas have been provided by our consultant architects. 2. Actual suite area may vary from the stated area. Drawings not to scale. The developer reserves the right to make revisions. 3. Calculation of suite area is measured as the area bounded by the centre line of demising or partition walls separating one unit from another unit, the exterior face of all exterior walls, and the exterior face of the corridor wall enclosing the adjoining unit. 4. Calculation of balcony area is measured as the area bounded by the centre line of demising or partition walls separating one unit from another unit, the outmost face of the enclosing guard and the external face of the adjoining balcony. 5. The units are measured at typical floor in the building. Columns may vary in size depending on the floor level. 6. For each unit type, unit sizes and details might be slightly different. Please refer to the sales and purchase agreement for the actual size of each specific unit. 7. North direction as per key plan.

STUDIO

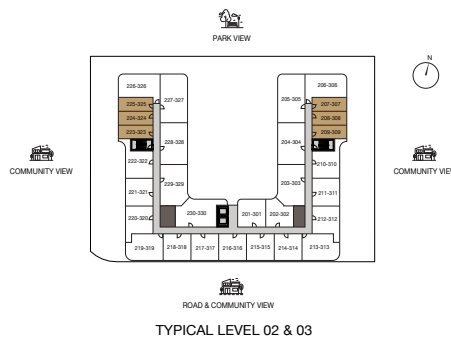
AVERAGE AREA - 367.26 SQ.FT. - 374.15 SQ.FT.



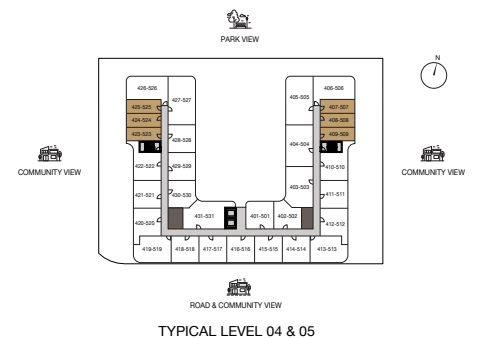
UNIT



LEVEL 01
UNITS - 107



TYPICAL LEVEL 02 & 03
UNITS - 207-307, 208-308, 209-309,
223-323, 224-324, 225-325



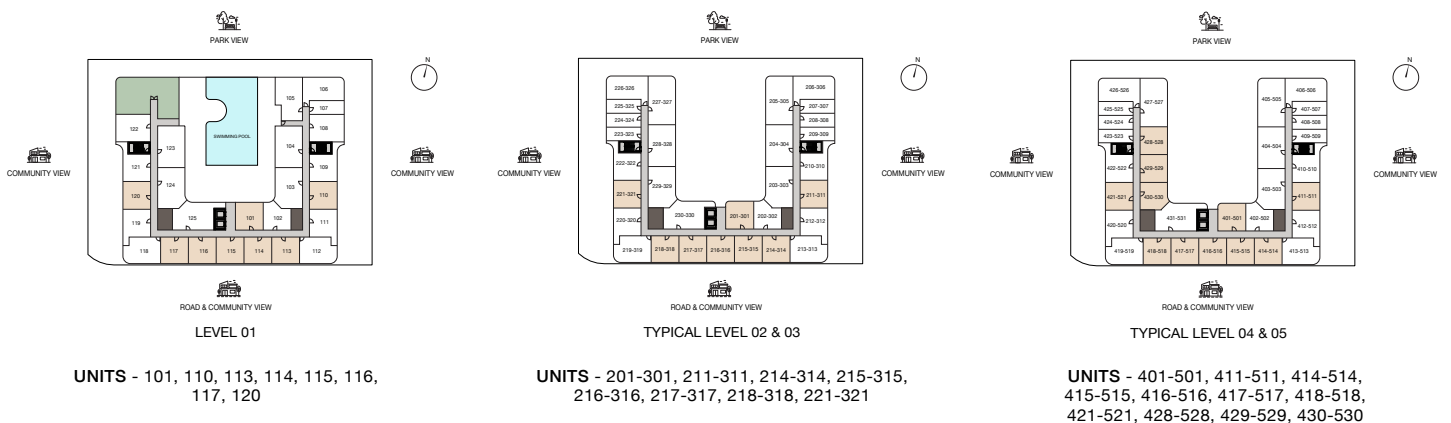
TYPICAL LEVEL 04 & 05
UNITS - 407-507, 408-508, 409-509,
423-523, 424-524, 425-525

1 BEDROOM - TYPE 1

AVERAGE AREA - 570.49 SQ.FT- 589.65 SQ.FT



UNIT



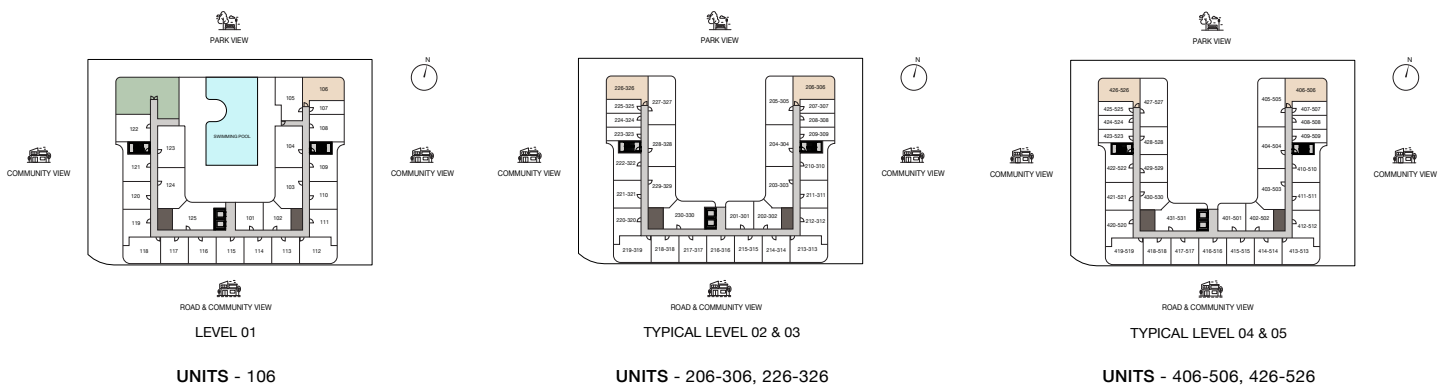
Disclaimer: 1. All Areas have been provided by our consultant architects. 2. Actual suite area may vary from the stated area. Drawings not to scale. The developer reserves the right to make revisions. 3. Calculation of suite area is measured as the area bounded by the centre line of demising or partition walls separating one unit from another unit, the exterior face of all exterior walls, and the exterior face of the corridor wall enclosing the adjoining unit. 4. Calculation of balcony area is measured as the area bounded by the centre line of demising or partition walls separating one unit from another unit, the outermost face of the enclosing guard and the external face of the adjoining balcony. 5. The units are measured at typical floor in the building. Columns may vary in size depending on the floor level. 6. For each unit type, unit sizes and details might be slightly different. Please refer to the sales and purchase agreement for the actual size of each specific unit. 7. North direction as per key plan.

1 BEDROOM - TYPE 2

AVERAGE AREA - 785.66 SQ.FT - 786.63 SQ.FT



UNIT



1 BEDROOM - TYPE 3

AVERAGE AREA - 747.12 SQ.FT



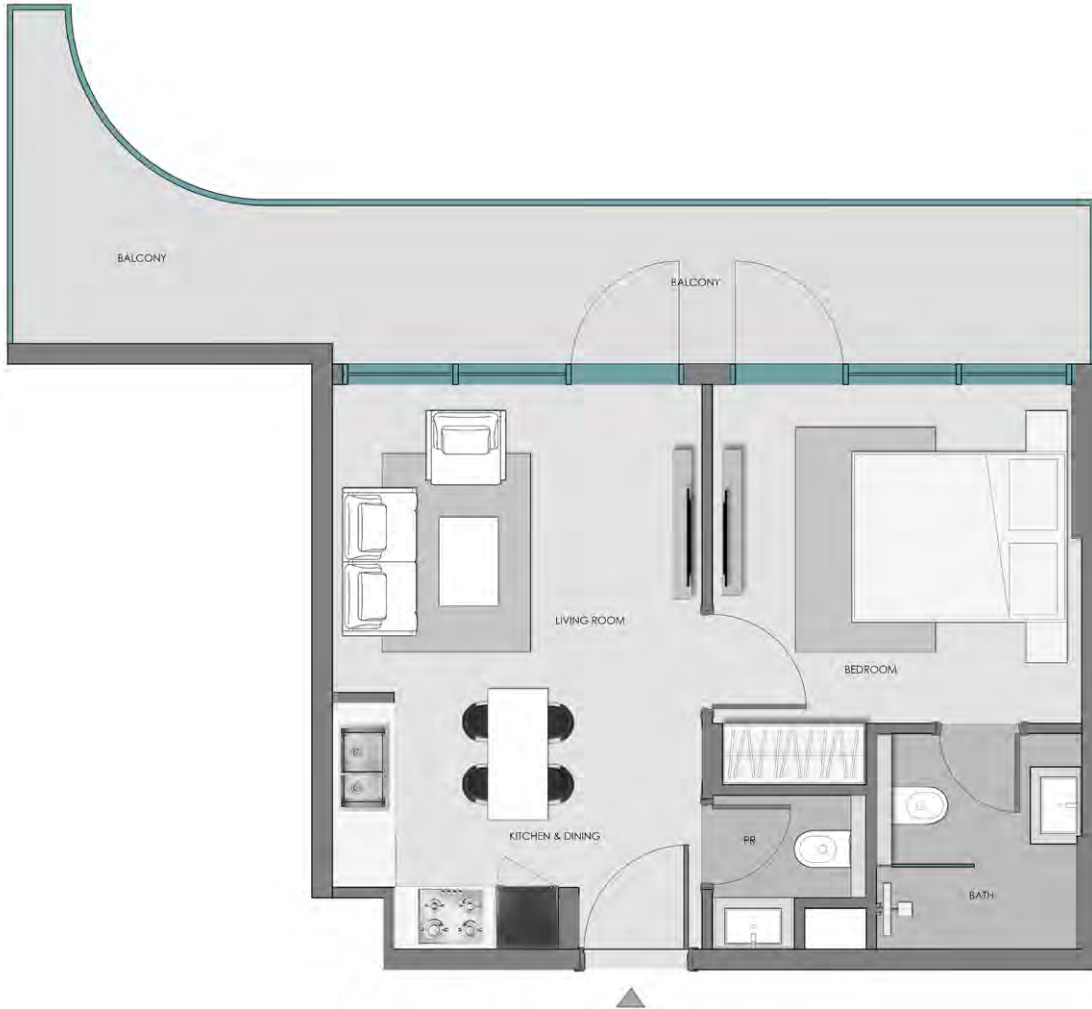
UNIT



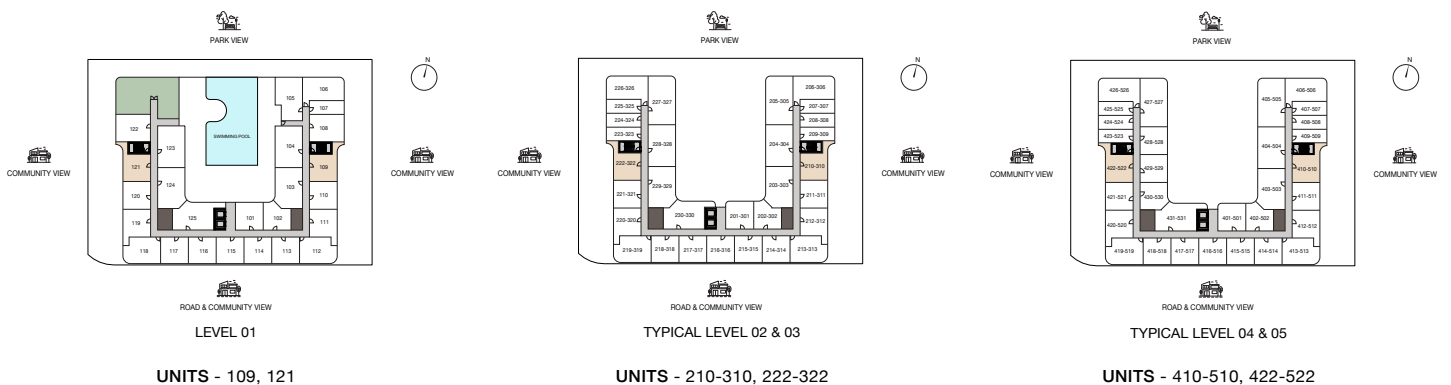
UNITS - 108, 122

1 BEDROOM - TYPE 4

AVERAGE AREA - 663.49 SQ.FT - 664.67 SQ.FT

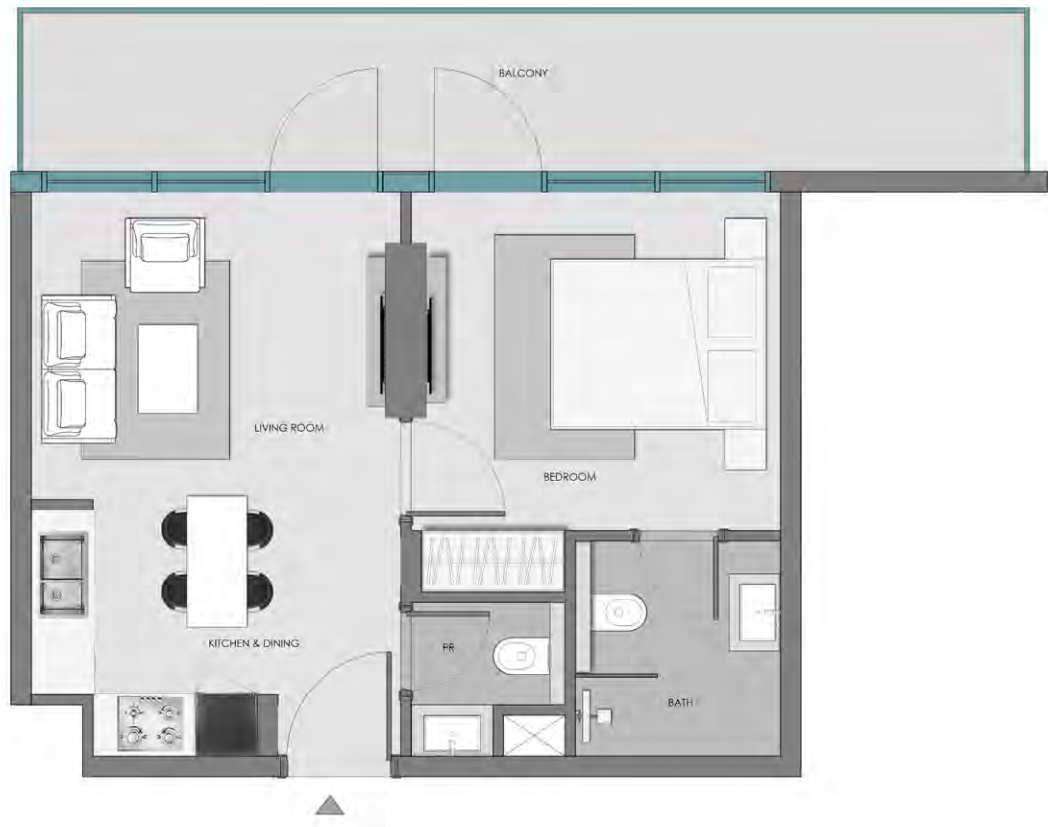


UNIT

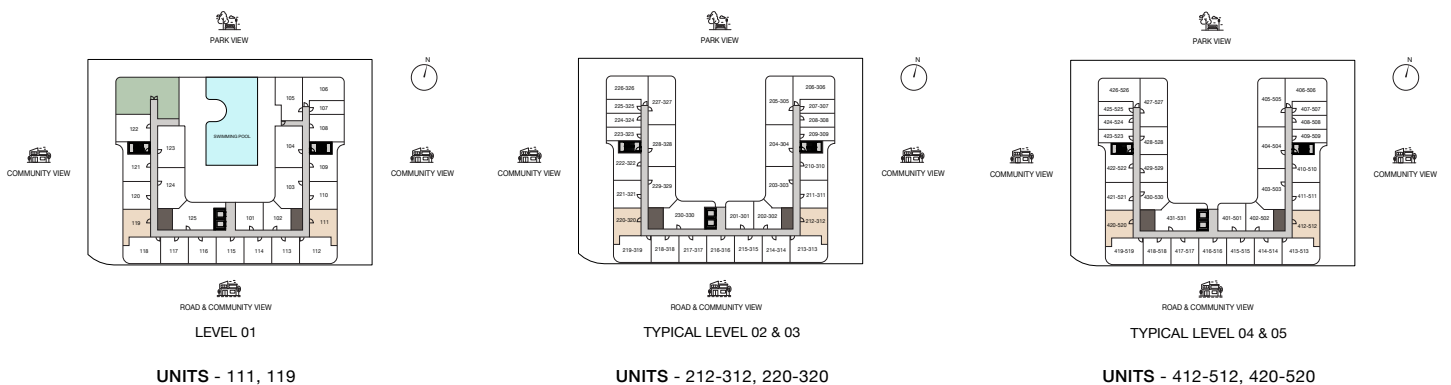


1 BEDROOM - TYPE 5

AVERAGE AREA - 627.75 SQ.FT.

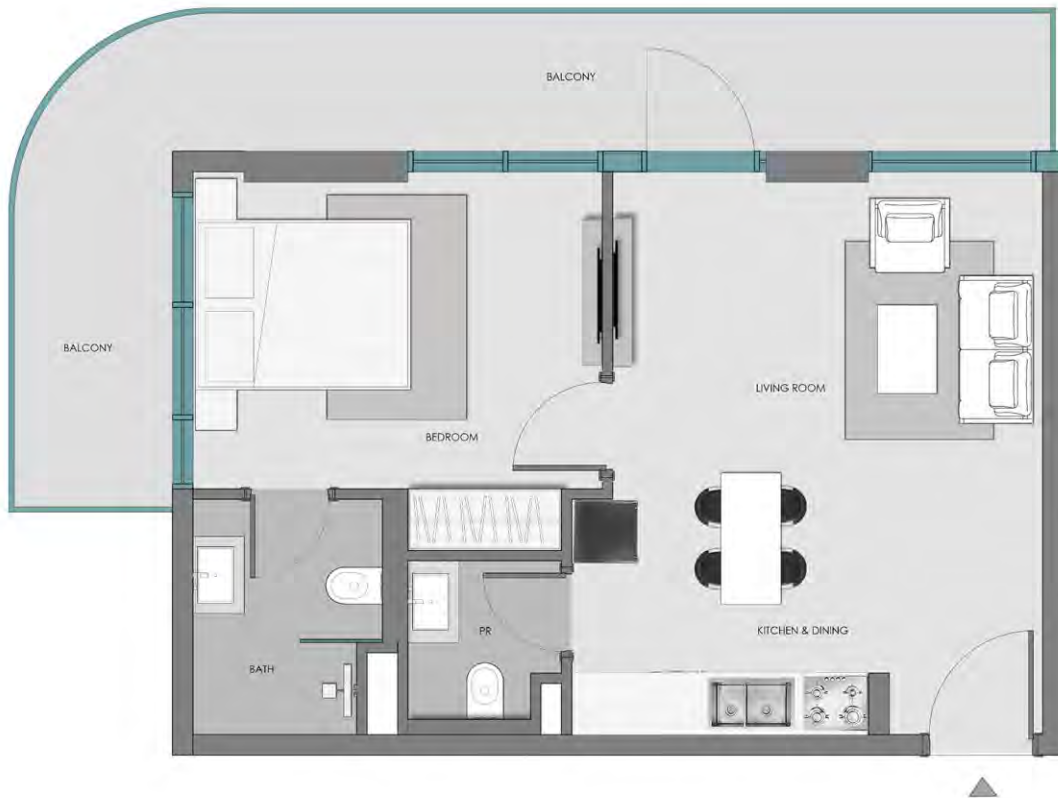


UNIT

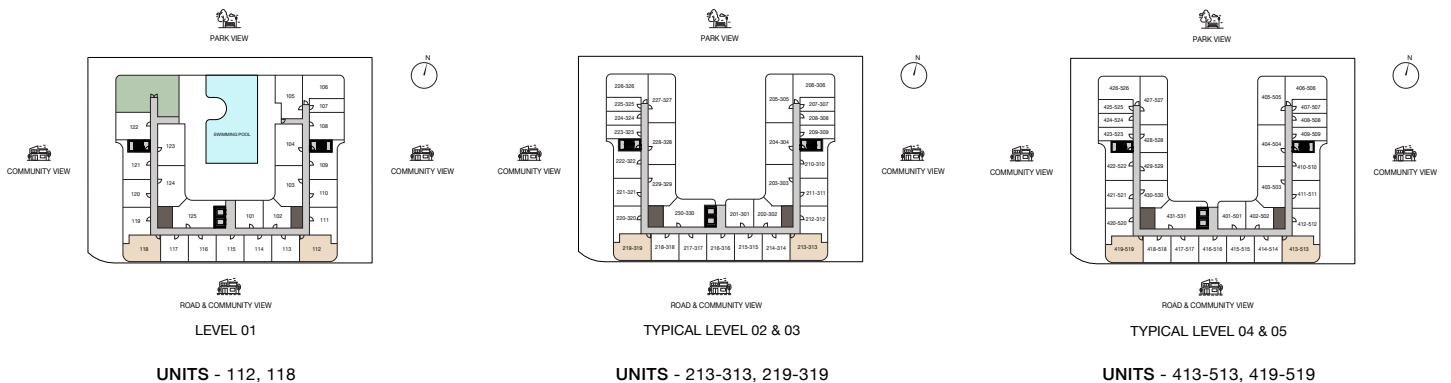


1 BEDROOM - TYPE 6

AVERAGE AREA - 728.72 SQ.FT - 729.04 SQ.FT



UNIT

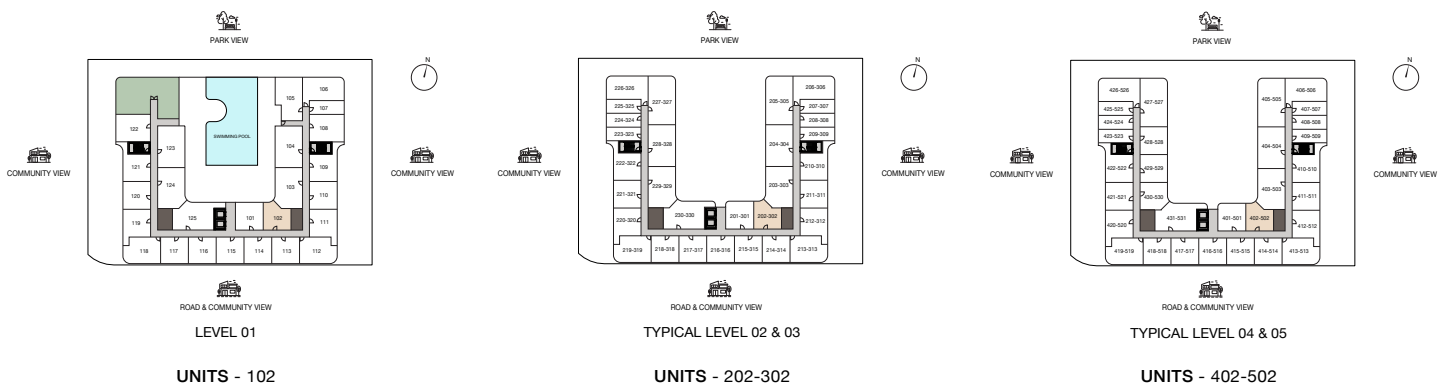


1 BEDROOM - TYPE 7

AVERAGE AREA - 521.62 SQ.FT -523.66 SQ.FT



UNIT

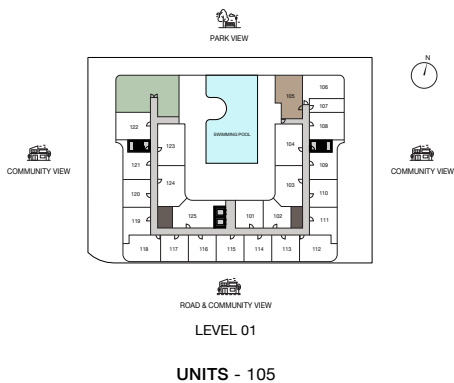


1 BEDROOM + STUDY

AVERAGE AREA - 835.17 SQ.FT.

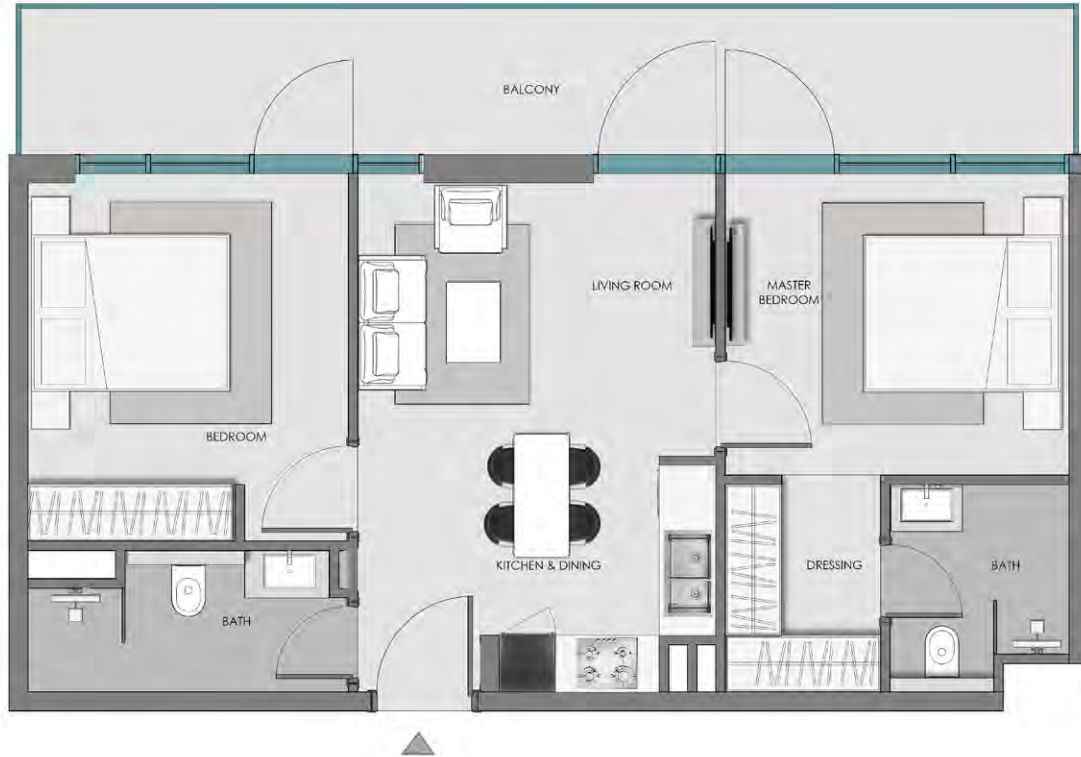


UNIT

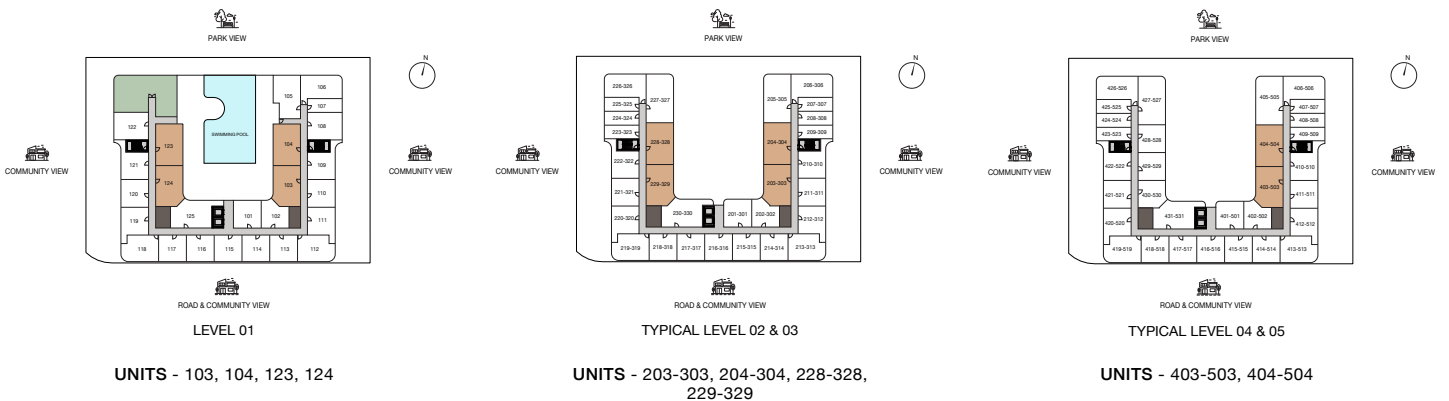


2 BEDROOM - TYPE 1

AVERAGE AREA - 859.51 SQ.FT. - 880.06 SQ.FT.

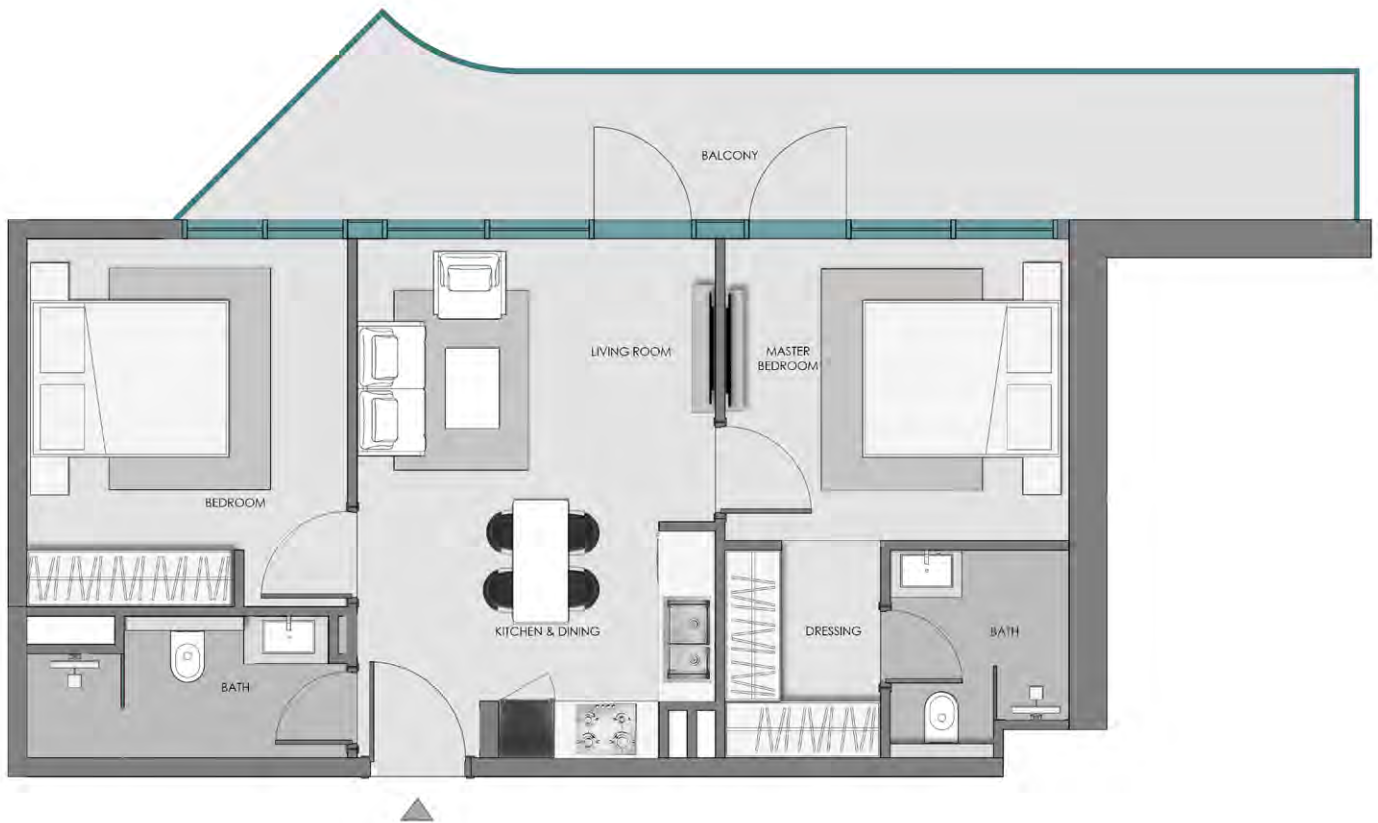


UNIT

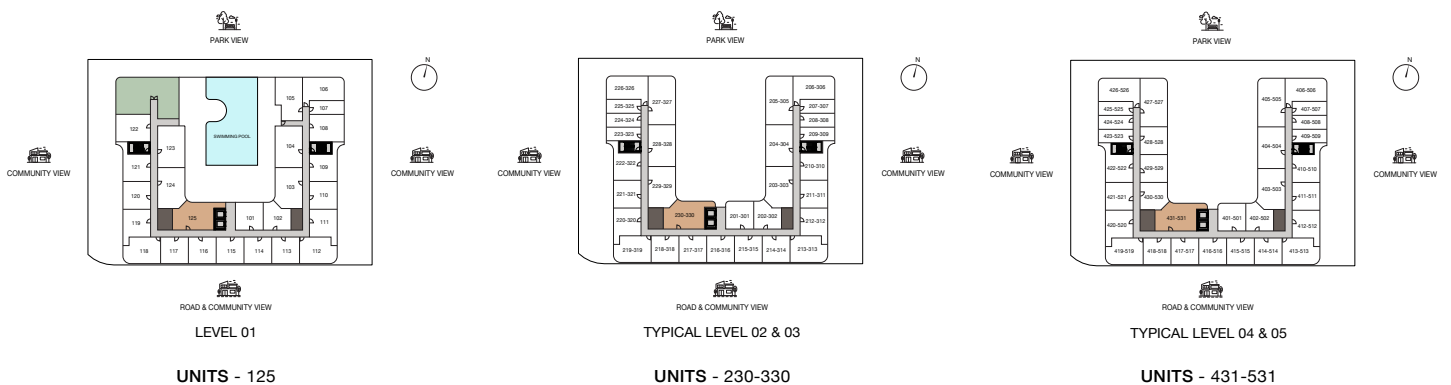


2 BEDROOM - TYPE 2

AVERAGE AREA - 896.42 SQ.FT. -904.38 SQ.FT.



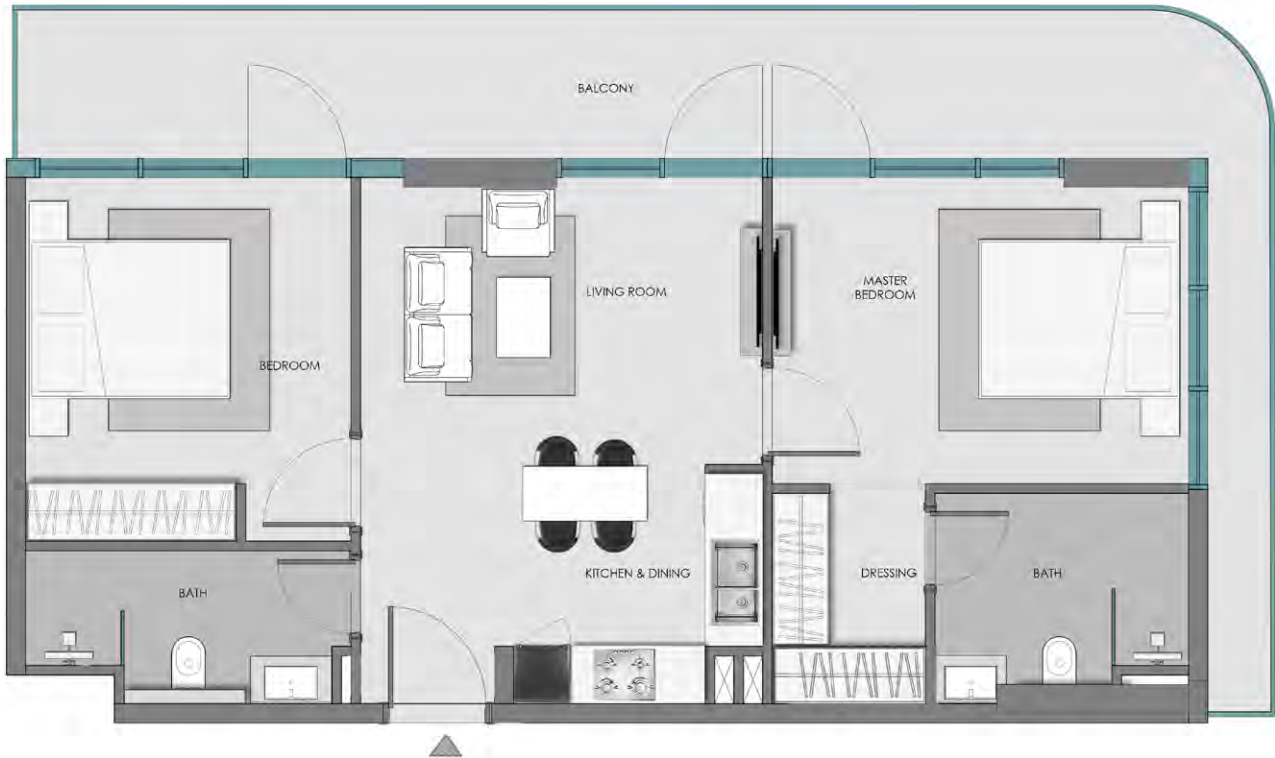
UNIT



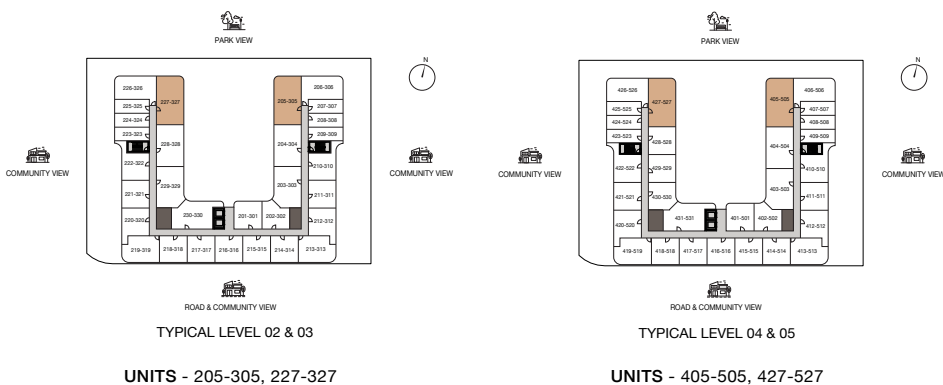
Disclaimer: 1. All Areas have been provided by our consultant architects. 2. Actual suite area may vary from the stated area. Drawings not to scale. The developer reserves the right to make revisions. 3. Calculation of suite area is measured as the area bounded by the centre line of demising or partition walls separating one unit from another unit, the exterior face of all exterior walls, and the exterior face of the corridor wall enclosing the adjoining unit. 4. Calculation of balcony area is measured as the area bounded by the centre line of demising or partition walls separating one unit from another unit, the outermost face of the enclosing guard and the external face of the adjoining balcony. 5. The units are measured at typical floor in the building. Columns may vary in size depending on the floor level. 6. For each unit type, unit sizes and details might be slightly different. Please refer to the sales and purchase agreement for the actual size of each specific unit. 7. North direction as per key plan.

2 BEDROOM - TYPE 3

AVERAGE AREA - 1,022.89 SQ.FT.



UNIT



SAMANA
DEVELOPERS