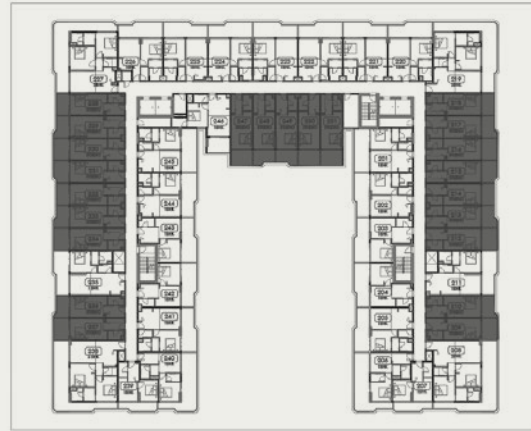




UNIT PLANS

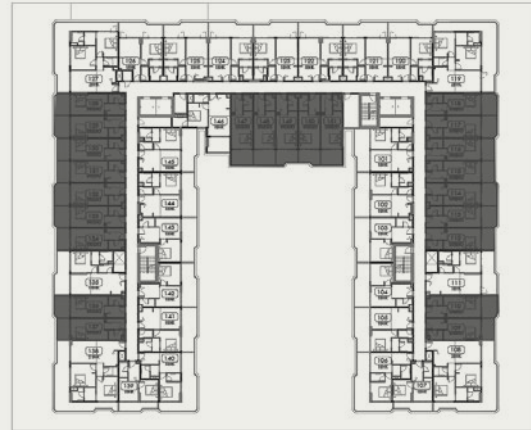
STUDIO + POOL (TYPE 1)



2nd, 4th, & 6th Typical Floor

UNITS

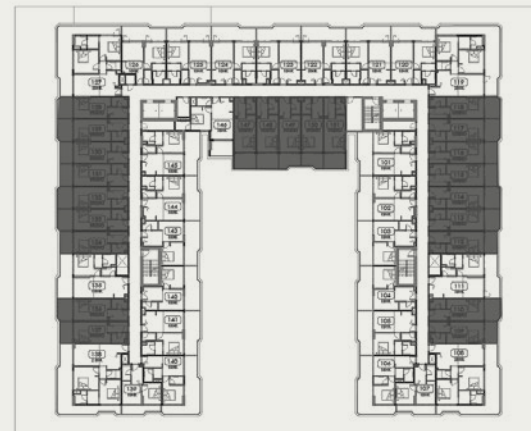
209, 210, 212, 213, 214, 215, 216, 217, 218, 228,
229, 230, 231, 232, 233, 234, 236, 237, 247, 248,
249, 250, 251, 409, 410, 412, 413, 414, 415, 416,
417, 418, 428, 429, 430, 431, 432, 433, 434, 436,
437, 447, 448, 449, 450, 451, 609, 610, 612, 613,
614, 615, 616, 617, 618, 628, 629, 630, 631, 632,
633, 634, 636, 637, 647, 648, 649, 650, 651



1st, 3rd, & 5th Typical Floor

UNITS

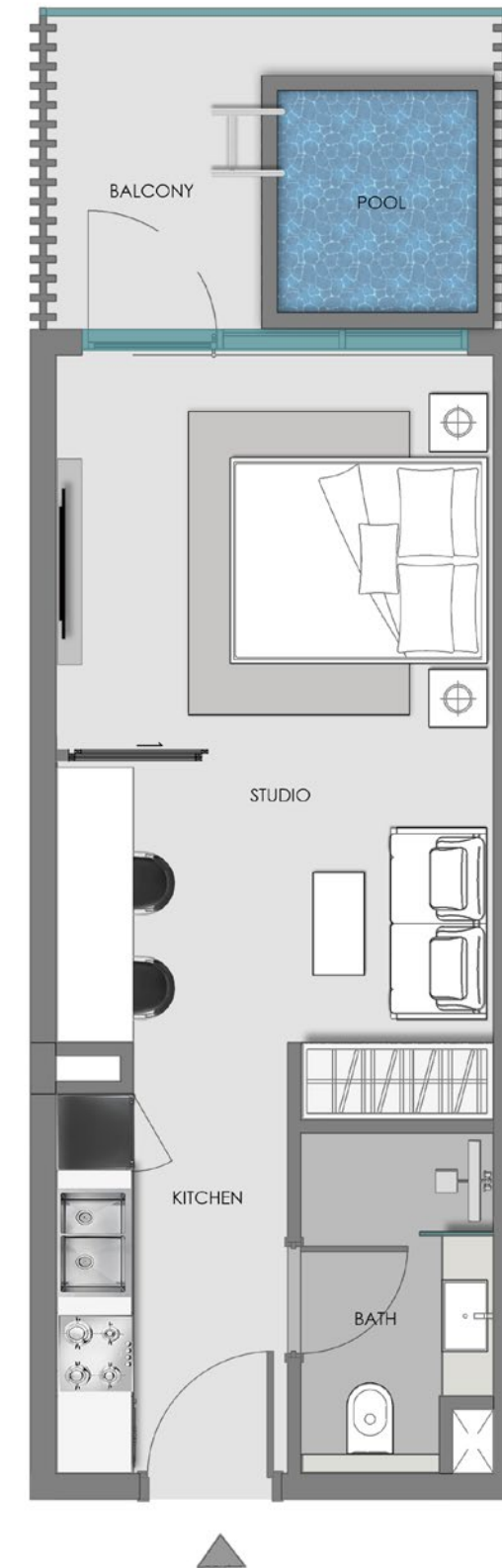
109, 110, 112, 113, 114, 115, 116, 117, 118, 128,
129, 130, 131, 132, 133, 134, 136, 137, 147, 148,
149, 150, 151, 309, 310, 312, 313, 314, 315, 316,
317, 318, 328, 329, 330, 331, 332, 333, 334, 336,
337, 347, 348, 349, 350, 351, 509, 510, 512, 513,
514, 515, 516, 517, 518, 528, 529, 530, 531, 532,
533, 534, 536, 537, 547, 548, 549, 550, 551



Ground Floor

UNITS

G09, G10, G12, G13, G14, G15,
G16, G17, G18, G21, G22, G23,
G24, G25, G26, G27, G29, G30



Disclaimer:

1. All room dimensions are measured to structural elements and exclude wall finishes and construction tolerances.
2. All dimensions have been provided by our consultant architects.
3. All materials, dimensions and drawings are approximate. Information is subject to change without notice.
4. Actual suite area may vary from the stated area. Drawings not to scale. The developer reserves the right to make revisions.
5. For each unit type, unit sizes and details might be slightly different. Please refer to the sales and purchase agreement for the actual size of each specific unit.
6. North direction as per the Keyplan

Features:
Convertible Units

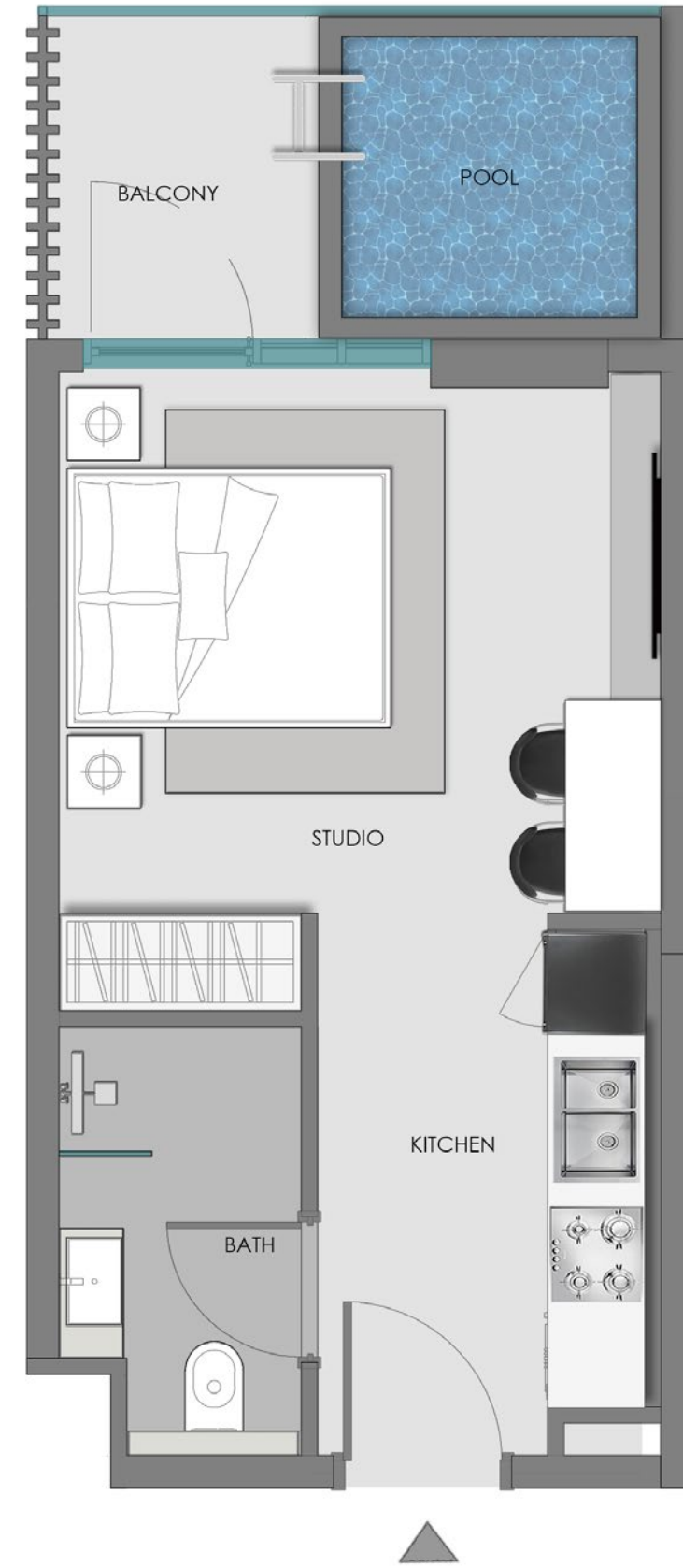


STUDIO + POOL (TYPE 2)



Ground Floor

UNITS
G04, G35

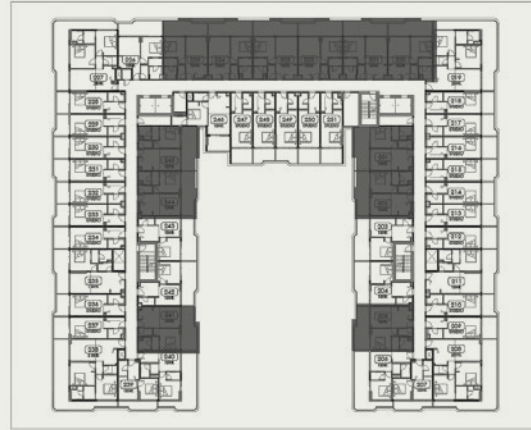


Disclaimer:

1. All room dimensions are measured to structural elements and exclude wall finishes and construction tolerances.
2. All dimensions have been provided by our consultant architects.
3. All materials, dimensions and drawings are approximate. Information is subject to change without notice.
4. Actual suite area may vary from the stated area. Drawings not to scale. The developer reserves the right to make revisions.
5. For each unit type, unit sizes and details might be slightly different. Please refer to the sales and purchase agreement for the actual size of each specific unit.
6. North direction as per the Keyplan



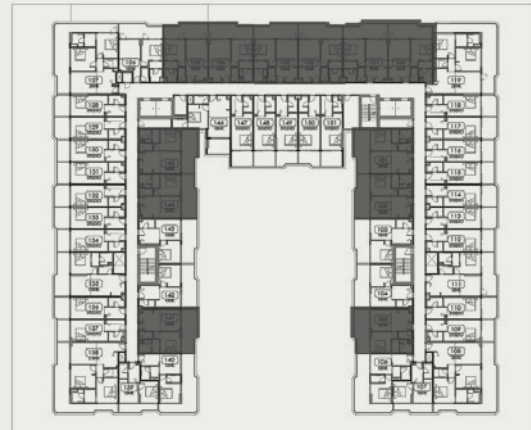
1 BEDROOM + POOL (TYPE 1)



2nd, 4th, & 6th Typical Floor

UNITS

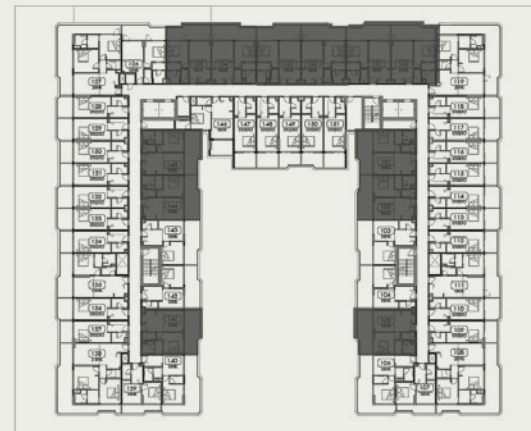
201, 202, 205, 220, 221, 222,
223, 224, 225, 241, 244, 245,
401, 402, 405, 420, 421, 422,
423, 424, 425, 441, 444, 445,
601, 602, 605, 620, 621, 622,
623, 624, 625, 641, 644, 645



1st, 3rd, & 5th Typical Floor

UNITS

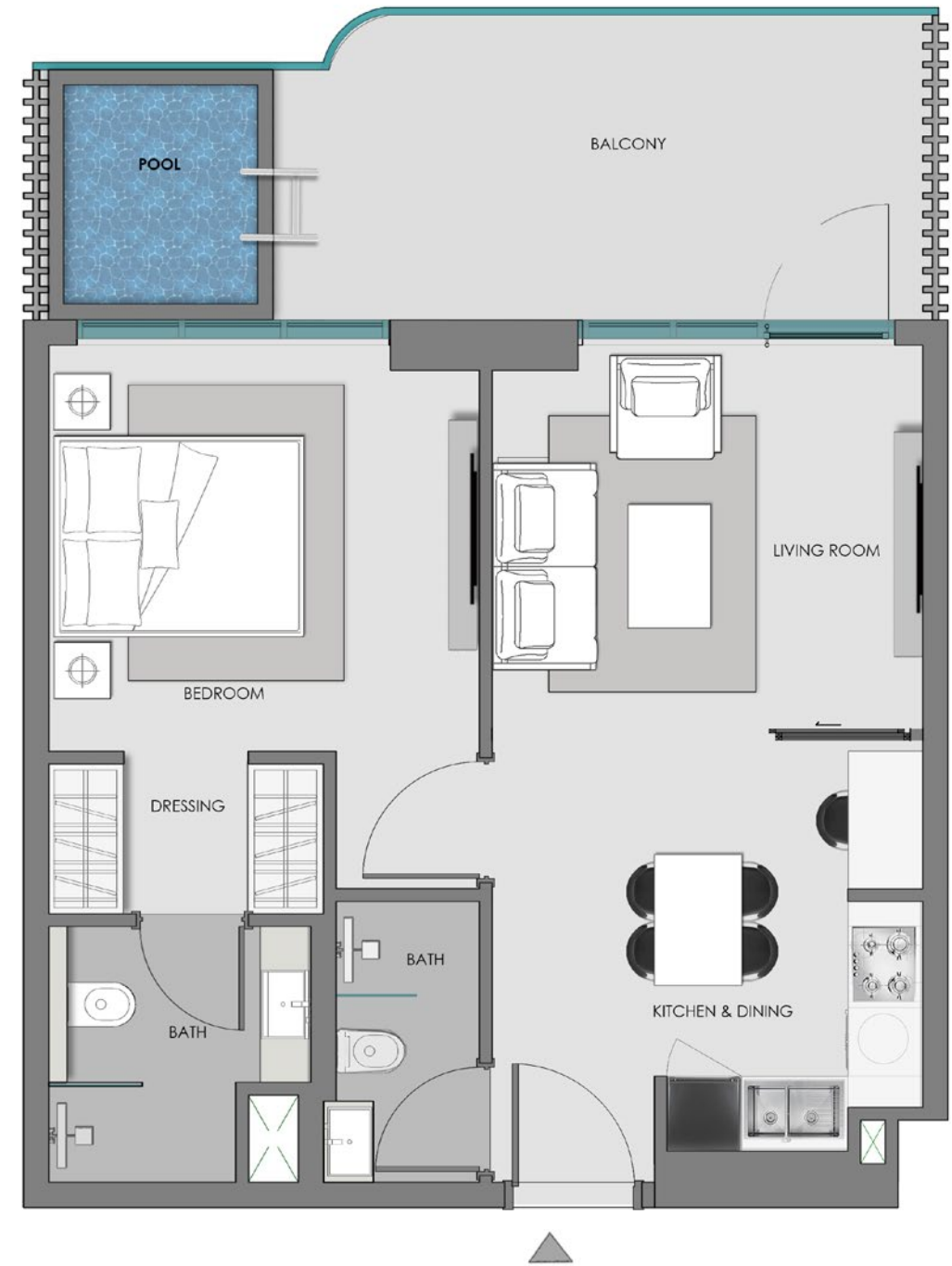
101, 102, 105, 120, 121, 122,
123, 124, 125, 141, 144, 145,
301, 302, 305, 320, 321, 322,
323, 324, 325, 341, 344, 345,
501, 502, 505, 520, 521, 522,
523, 524, 525, 541, 544, 545



Ground Floor

UNITS

G01, G02, G05, G20,
G34, G37, G38



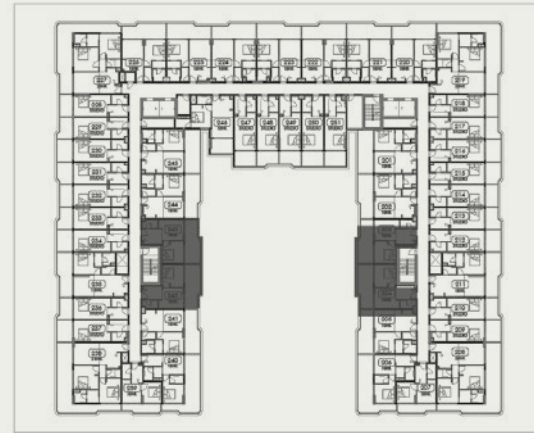
Disclaimer:

1. All room dimensions are measured to structural elements and exclude wall finishes and construction tolerances.
2. All dimensions have been provided by our consultant architects.
3. All materials, dimensions and drawings are approximate. Information is subject to change without notice.
4. Actual suite area may vary from the stated area. Drawings not to scale. The developer reserves the right to make revisions.
5. For each unit type, unit sizes and details might be slightly different. Please refer to the sales and purchase agreement for the actual size of each specific unit.
6. North direction as per the Keyplan

Features:
Convertible Units



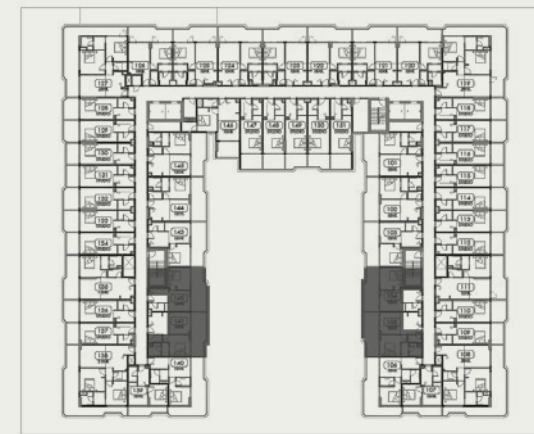
1 BEDROOM + POOL (TYPE 2)



2nd, 4th, & 6th Typical Floor

UNITS

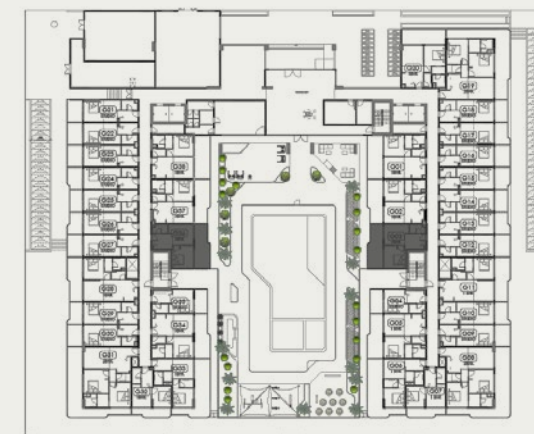
203, 204, 242, 243
403, 404, 442, 443
603, 604, 642, 643



1st, 3rd, & 5th Typical Floor

UNITS

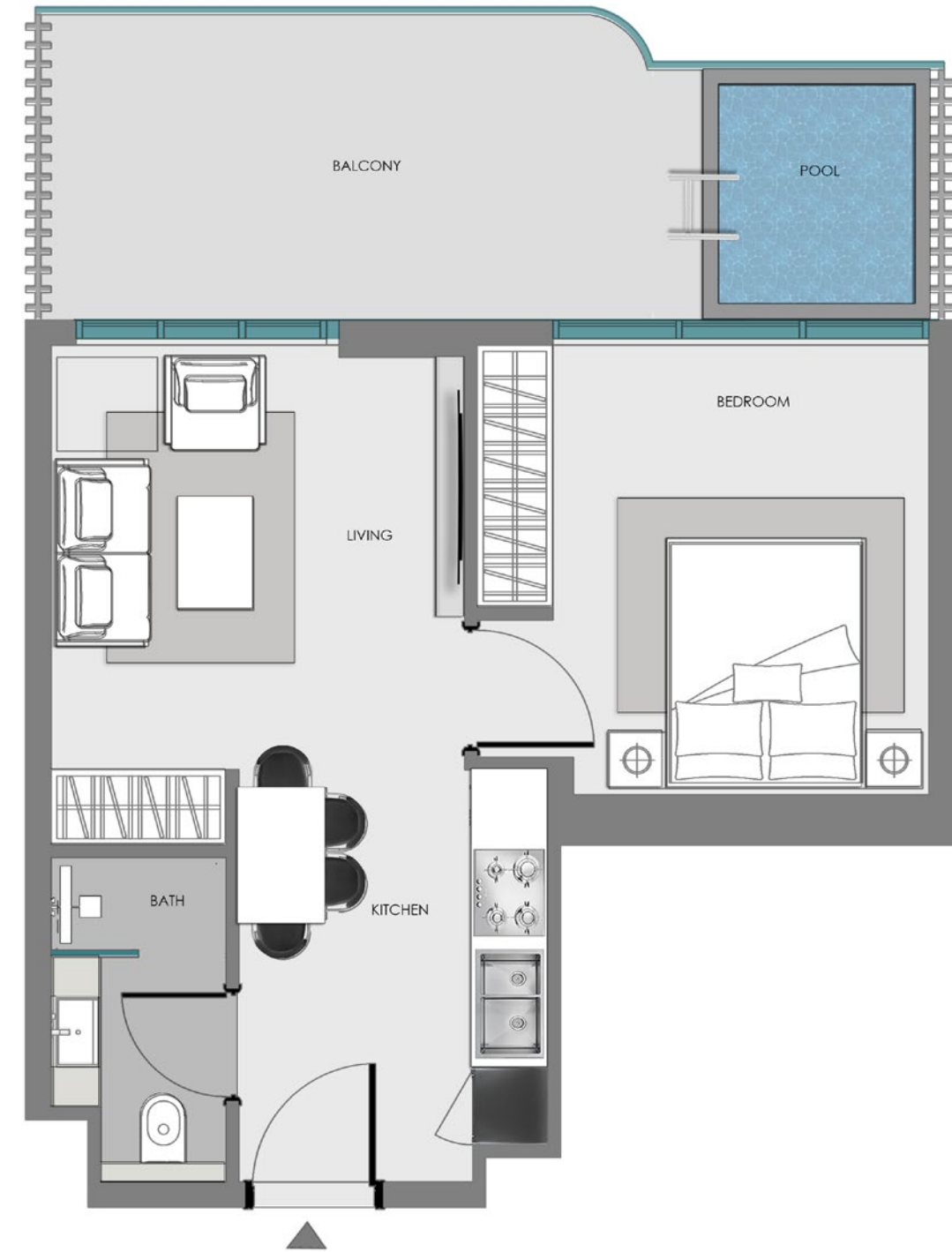
103, 104, 142, 143
303, 304, 342, 343
503, 504, 542, 543



Ground Floor

UNITS

G03, G36

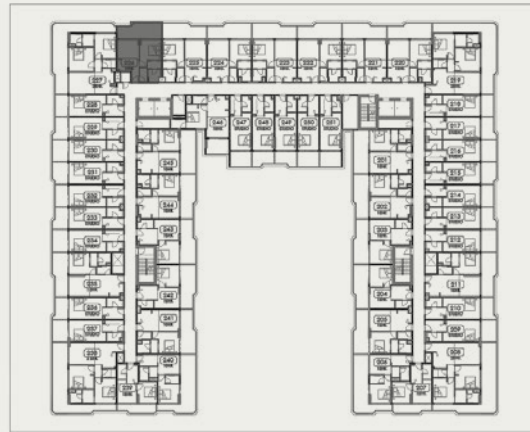


Disclaimer:

1. All room dimensions are measured to structural elements and exclude wall finishes and construction tolerances.
2. All dimensions have been provided by our consultant architects.
3. All materials, dimensions and drawings are approximate. Information is subject to change without notice.
4. Actual suite area may vary from the stated area. Drawings not to scale. The developer reserves the right to make revisions.
5. For each unit type, unit sizes and details might be slightly different. Please refer to the sales and purchase agreement for the actual size of each specific unit.
6. North direction as per the Keyplan



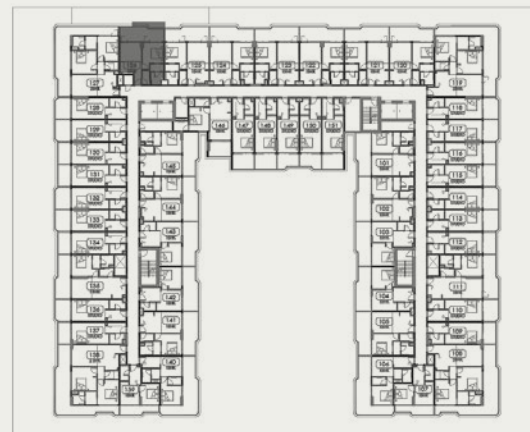
1 BEDROOM + POOL (TYPE 3)



2nd, 4th, & 6th Typical Floor

UNITS

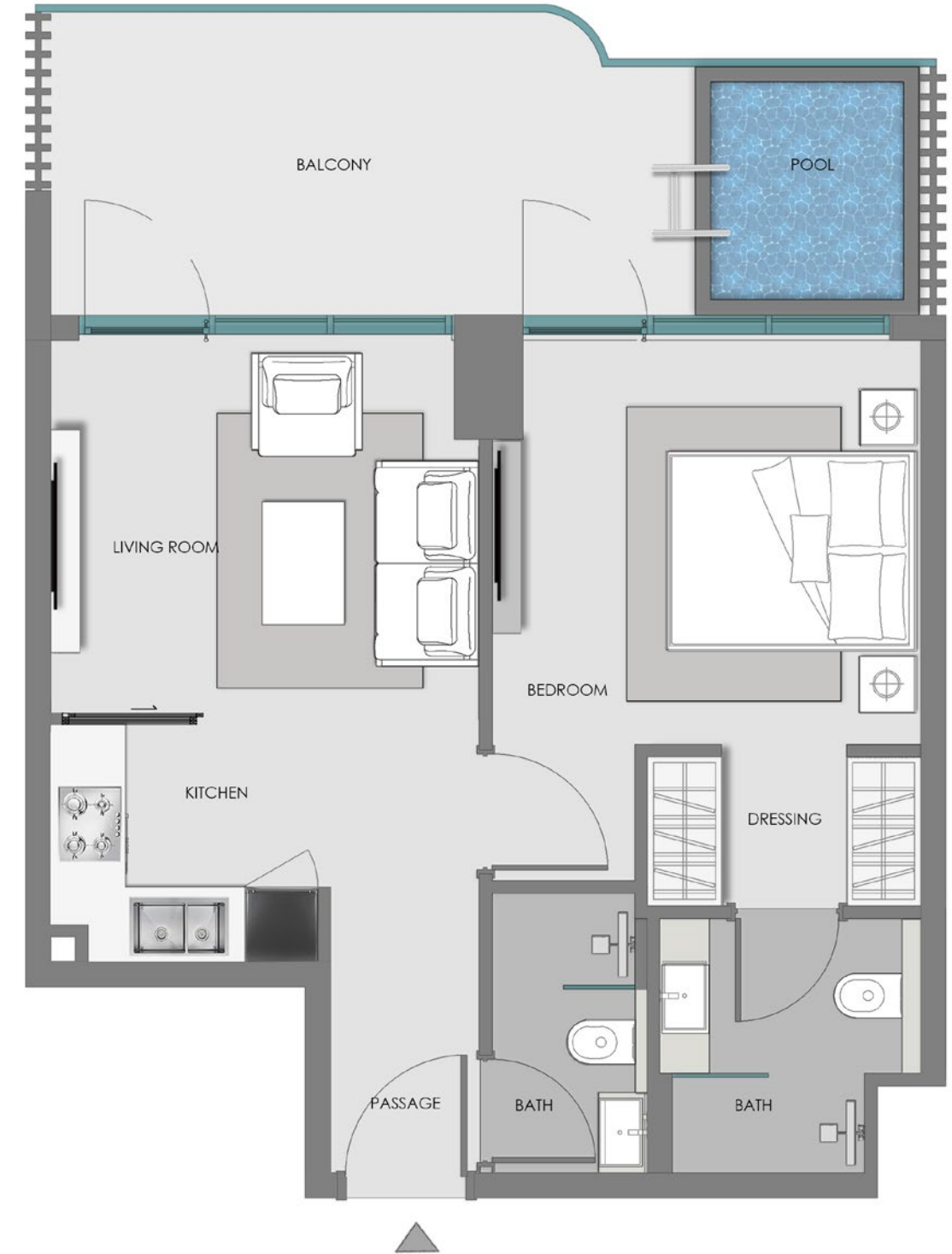
226, 426, 626



1st, 3rd, & 5th Typical Floor

UNITS

126, 326, 526



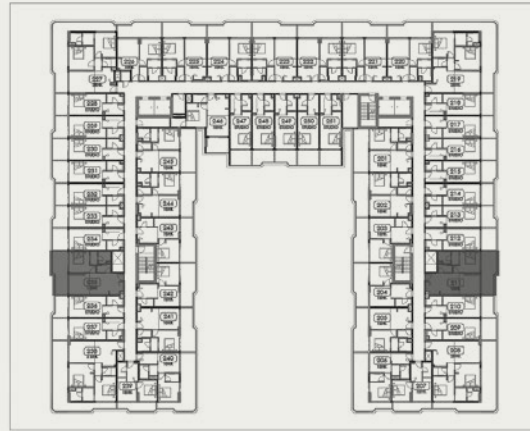
Disclaimer:

1. All room dimensions are measured to structural elements and exclude wall finishes and construction tolerances.
2. All dimensions have been provided by our consultant architects.
3. All materials, dimensions and drawings are approximate. Information is subject to change without notice.
4. Actual suite area may vary from the stated area. Drawings not to scale. The developer reserves the right to make revisions.
5. For each unit type, unit sizes and details might be slightly different. Please refer to the sales and purchase agreement for the actual size of each specific unit.
6. North direction as per the Keyplan

Features:
Convertible Units

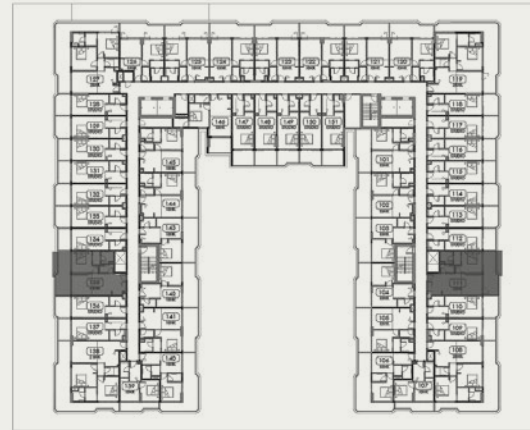


1 BEDROOM + POOL (TYPE 4)



2nd, 4th, & 6th Typical Floor

- UNITS
 235, 211
 435, 411
 635, 611



1st, 3rd, & 5th Typical Floor

- UNITS
 135, 111,
 335, 311,
 535, 511



Ground Floor

- UNITS
 G28, G11



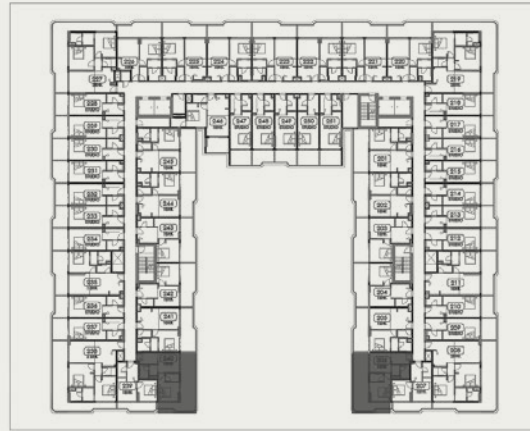
Disclaimer:

1. All room dimensions are measured to structural elements and exclude wall finishes and construction tolerances.
2. All dimensions have been provided by our consultant architects.
3. All materials, dimensions and drawings are approximate. Information is subject to change without notice.
4. Actual suite area may vary from the stated area. Drawings not to scale. The developer reserves the right to make revisions.
5. For each unit type, unit sizes and details might be slightly different. Please refer to the sales and purchase agreement for the actual size of each specific unit.
6. North direction as per the Keyplan

Features:
 Convertible Units



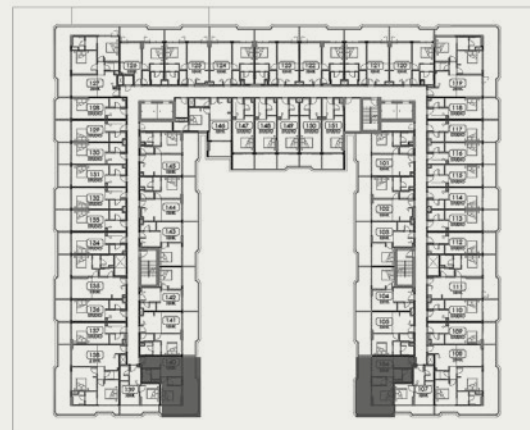
1 BEDROOM + POOL (TYPE 5)



2nd, 4th, & 6th Typical Floor

UNITS

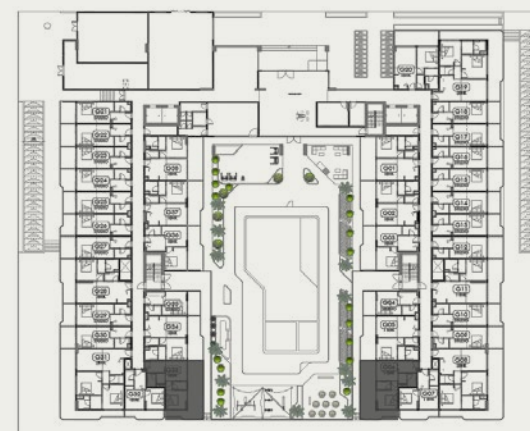
- 235, 211,
- 435, 411,
- 635, 611



1st, 3rd, & 5th Typical Floor

UNITS

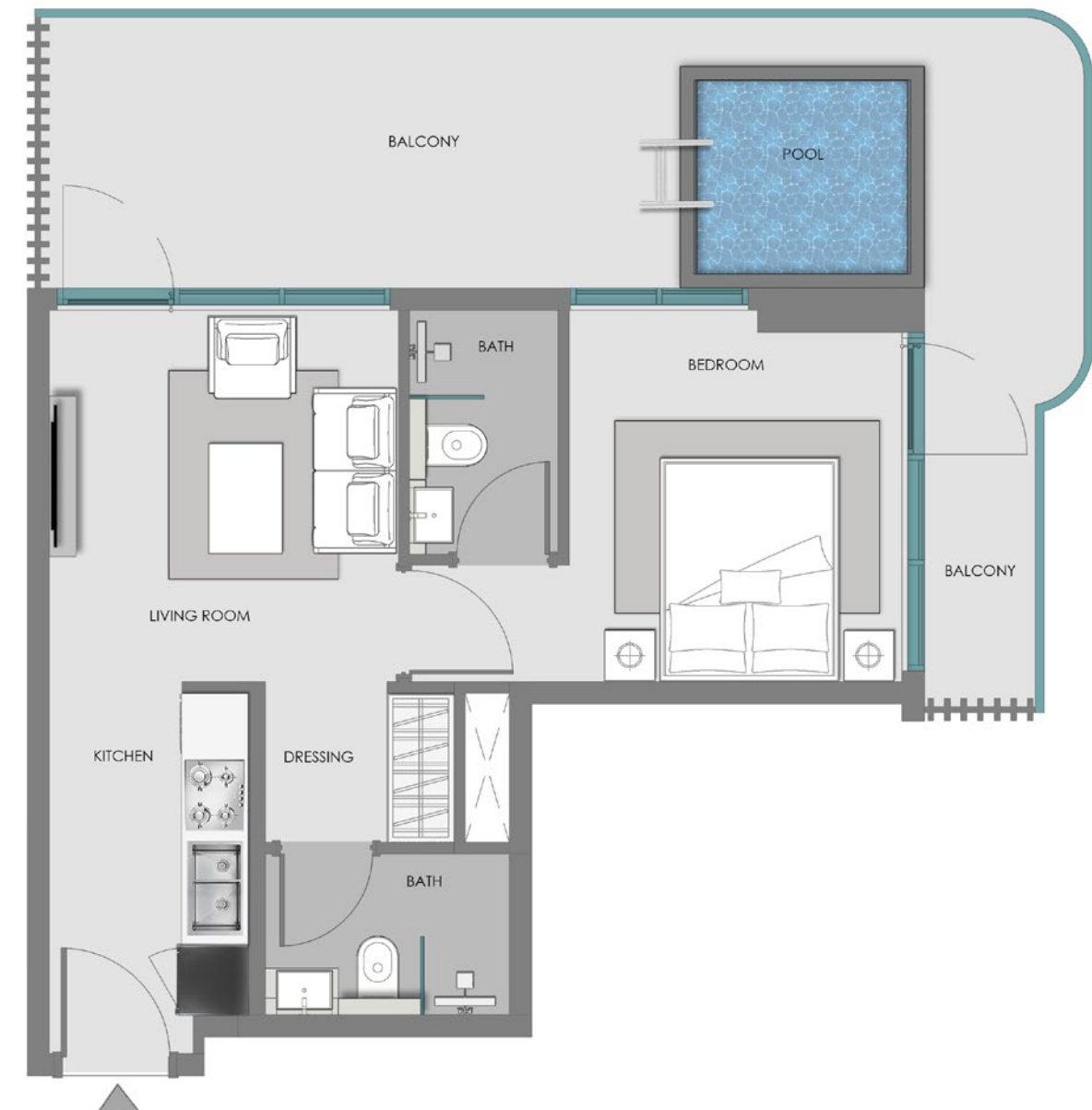
- 135, 111,
- 335, 311,
- 535, 511



Ground Floor

UNITS

- G28, G11



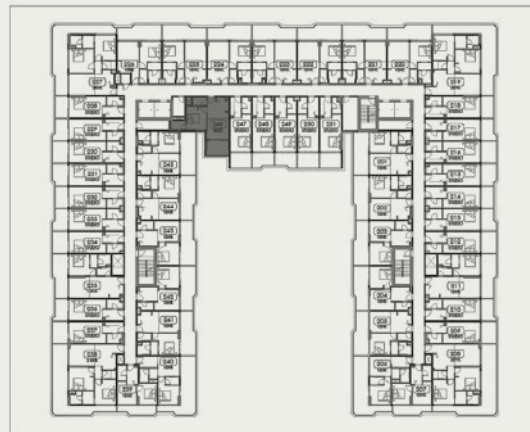
Disclaimer:

1. All room dimensions are measured to structural elements and exclude wall finishes and construction tolerances.
2. All dimensions have been provided by our consultant architects.
3. All materials, dimensions and drawings are approximate. Information is subject to change without notice.
4. Actual suite area may vary from the stated area. Drawings not to scale. The developer reserves the right to make revisions.
5. For each unit type, unit sizes and details might be slightly different. Please refer to the sales and purchase agreement for the actual size of each specific unit.
6. North direction as per the Keyplan

Features:
Convertible Units



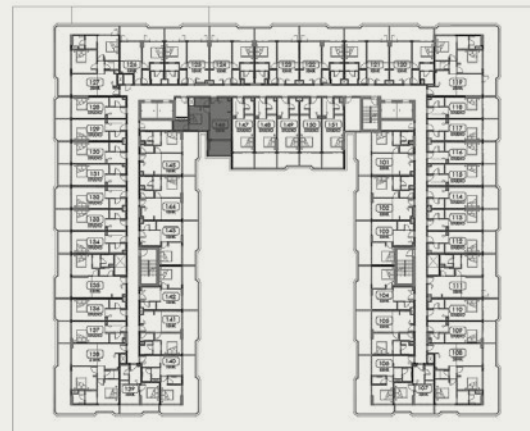
1 BEDROOM + POOL (TYPE 6)



2nd, 4th, & 6th Typical Floor

UNITS

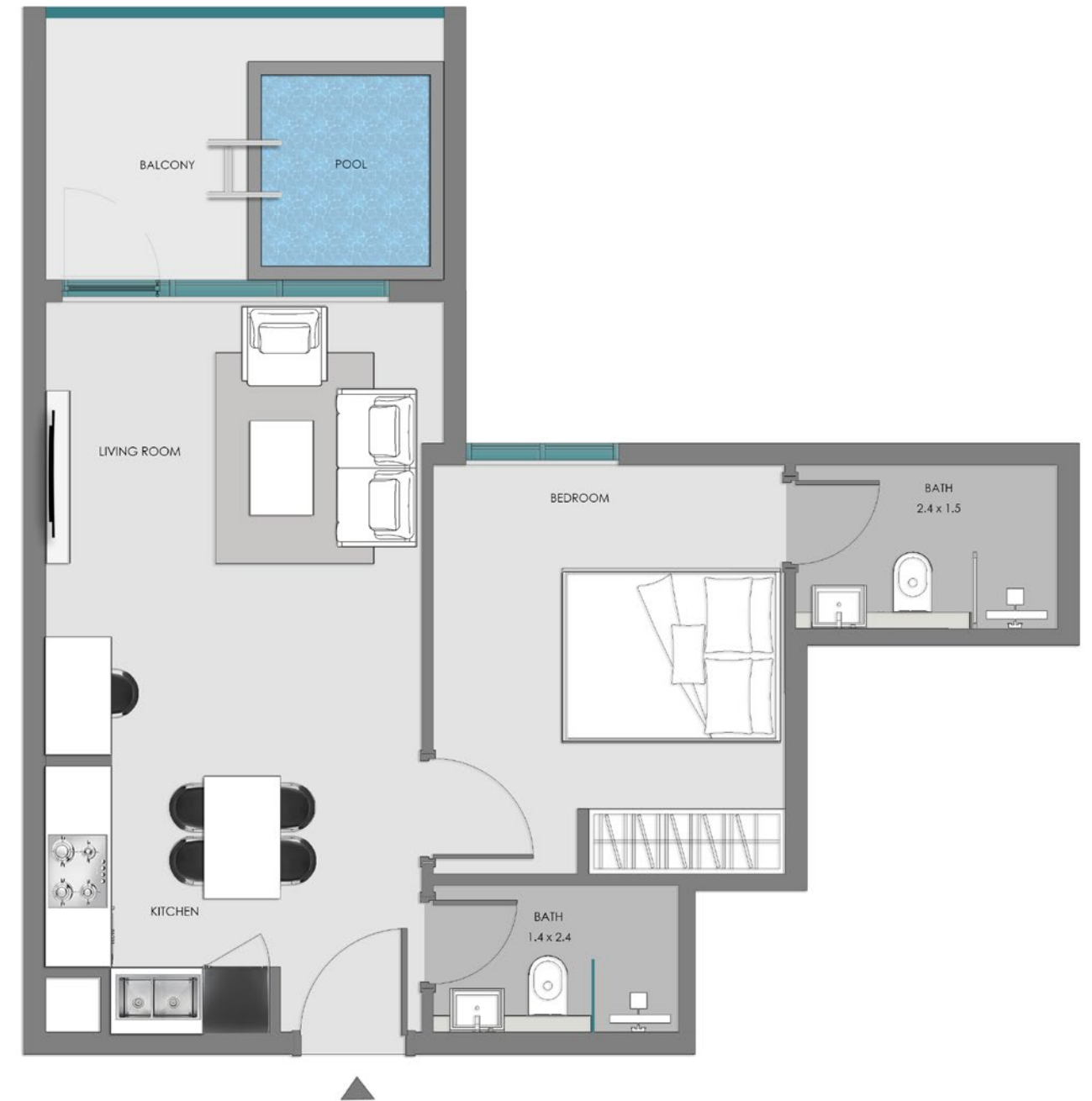
246, 464, 646



1st, 3rd, & 5th Typical Floor

UNITS

146, 346, 546

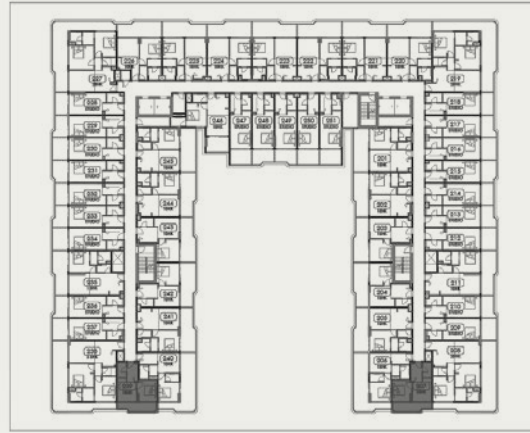


Disclaimer:

1. All room dimensions are measured to structural elements and exclude wall finishes and construction tolerances.
2. All dimensions have been provided by our consultant architects.
3. All materials, dimensions and drawings are approximate. Information is subject to change without notice.
4. Actual suite area may vary from the stated area. Drawings not to scale. The developer reserves the right to make revisions.
5. For each unit type, unit sizes and details might be slightly different. Please refer to the sales and purchase agreement for the actual size of each specific unit.
6. North direction as per the Keyplan



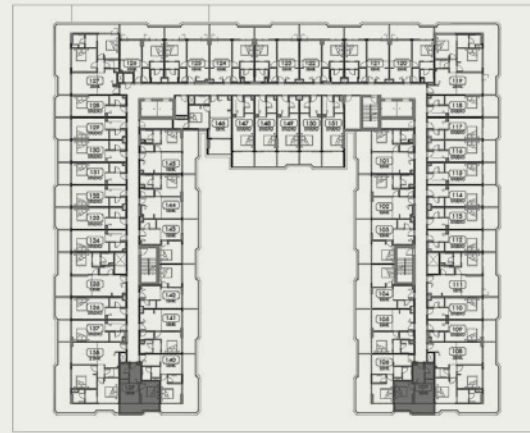
1 BEDROOM (TYPE 7)



2nd, 4th, & 6th Typical Floor

UNITS

207, 239, 407, 439, 607, 639



1st, 3rd, & 5th Typical Floor

UNITS

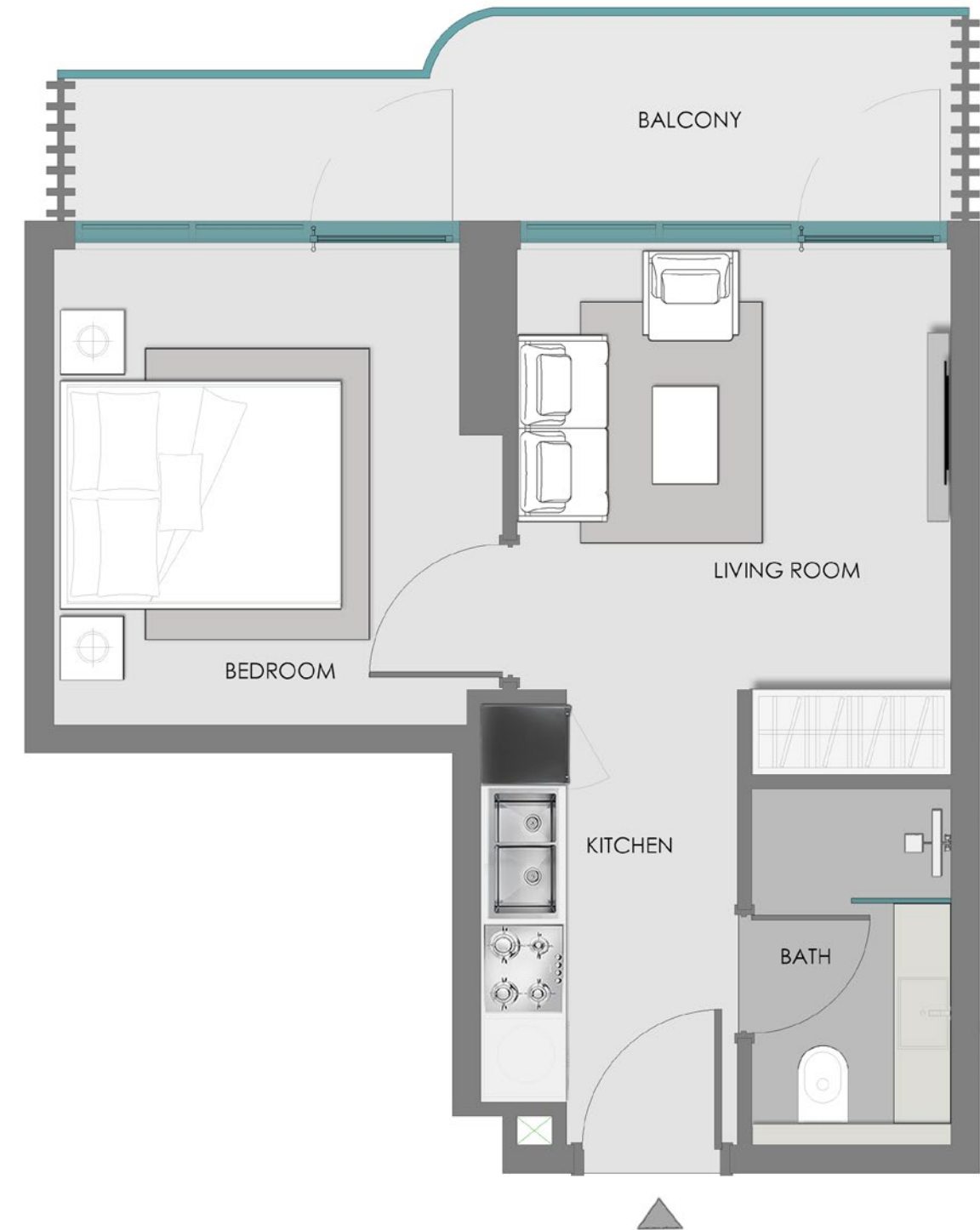
107, 139, 307, 339, 507, 539



Ground Floor

UNITS

G07, G32

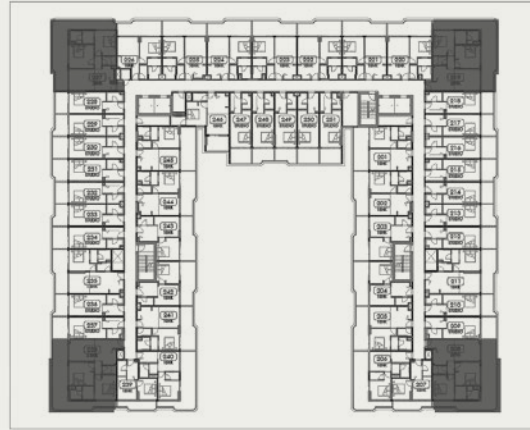


Disclaimer:

1. All room dimensions are measured to structural elements and exclude wall finishes and construction tolerances.
2. All dimensions have been provided by our consultant architects.
3. All materials, dimensions and drawings are approximate. Information is subject to change without notice.
4. Actual suite area may vary from the stated area. Drawings not to scale. The developer reserves the right to make revisions.
5. For each unit type, unit sizes and details might be slightly different. Please refer to the sales and purchase agreement for the actual size of each specific unit.
6. North direction as per the Keyplan



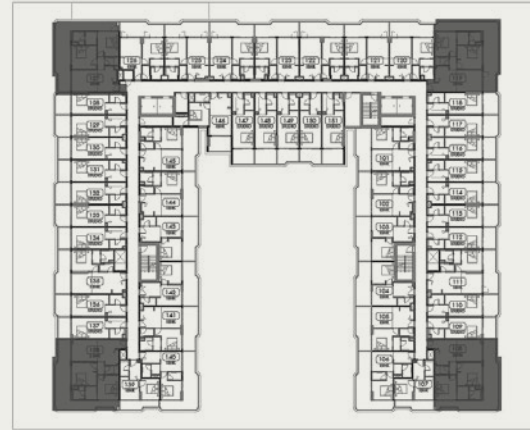
2 BEDROOM + POOL



2nd, 4th, & 6th Typical Floor

UNITS

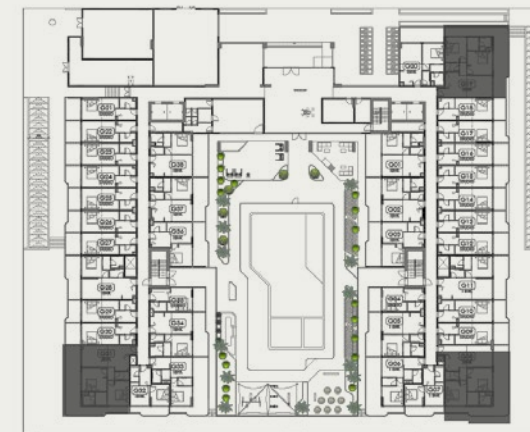
208, 219, 227, 238,
408, 419, 427, 438
608, 619, 627, 638



1st, 3rd, & 5th Typical Floor

UNITS

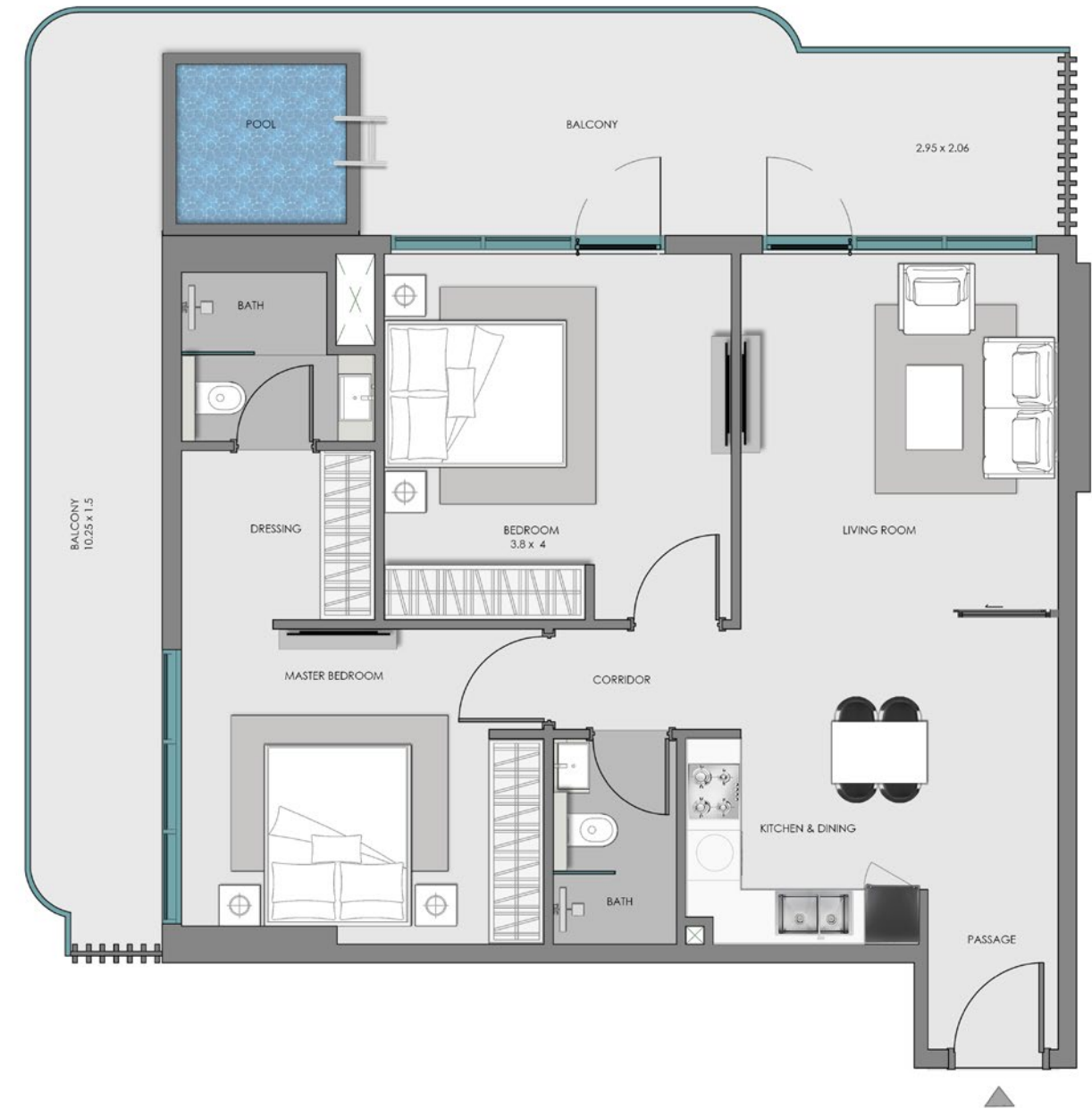
108, 119, 127, 138
308, 319, 327, 338
508, 519, 527, 538



Ground Floor

UNITS

G08, G19, G31



Disclaimer:

1. All room dimensions are measured to structural elements and exclude wall finishes and construction tolerances.
2. All dimensions have been provided by our consultant architects.
3. All materials, dimensions and drawings are approximate. Information is subject to change without notice.
4. Actual suite area may vary from the stated area. Drawings not to scale. The developer reserves the right to make revisions.
5. For each unit type, unit sizes and details might be slightly different. Please refer to the sales and purchase agreement for the actual size of each specific unit.
6. North direction as per the Keyplan

Features:
Convertible Units

